



Uplink Cellular Upload Download



SIERRA
WIRELESS

Uplink Model LTE30EX

Uplink Panel Programmer Basics

- Works with Caddx, DSC and Radionics panels
- Use the manufactures software
- The phone number is the serial number
- Supports Windows Vista, 7 and 10
- Open ports 1080 and 30300 for bidirectional TCP
- Ensure you have the *latest* version of firmware



Opening Ports

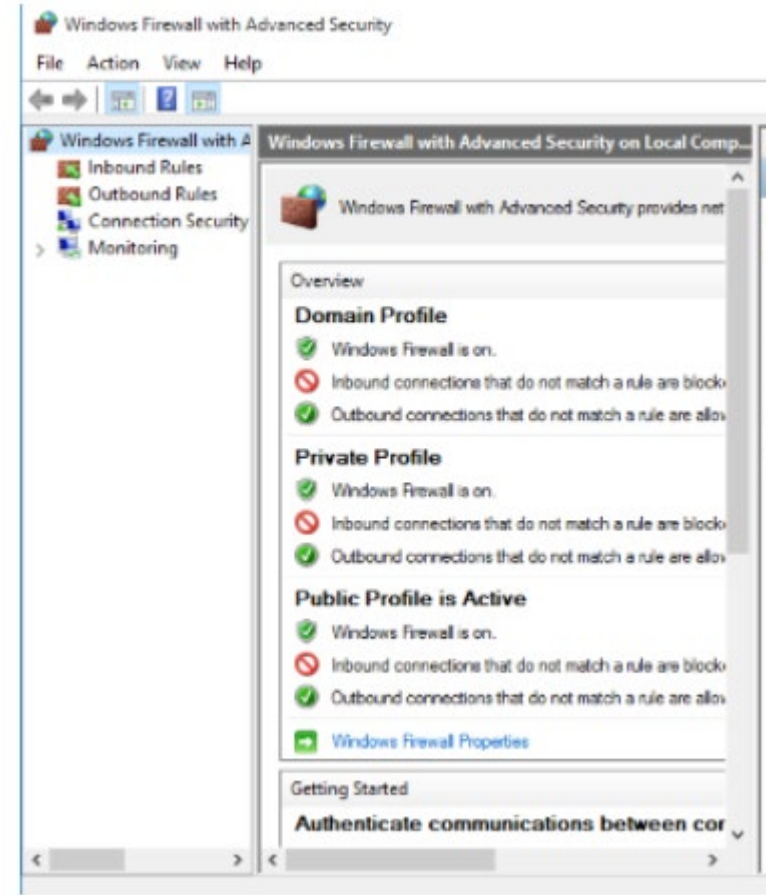
A port is a communication endpoint in software communication. It is like a door. If the door is locked, you can not get in.

- Confirm you only have one firewall software running
- Confirm that your provider does not block ports either locally in the router or virtually
- Confirm you do not have other software using the same port as the UPP software



Opening a Port in Windows 10

1. Navigate to Control Panel, System and Security and Windows Firewall.
2. Select Advanced settings and highlight Inbound Rules in the left pane.
3. Right click Inbound Rules and select New Rule.
4. Add the port you need to open and click Next.
5. Add the protocol (TCP or UDP) and the port number into the next window and click Next.
6. Select Allow the connection in the next window and hit Next.
7. Select the network type as you see fit and click Next.
8. Name the rule something meaningful and click Finish



Opening a Port in Windows 7

1. Click Start button > Control Panel
2. Click System and Security
3. On the right, click Windows Firewall
4. On the left, click Advanced Settings
5. In the left pane, right click on Inbound Rules
6. The New Inbound Rule Wizard will appear.
7. Select Port for the type of rule
8. The Protocol and Ports screen will appear.
9. Select the TCP protocol.
10. Now select the Specific local ports radio button and enter the port 30300
11. Click Next.
12. Select the Allow the connection radio button.



Opening a Port in Norton Security

1. Open the Norton Internet Security control panel by double-clicking the program icon in the computer's system tray or selecting it from the computer's desktop.
2. Choose the "Settings" menu option on the control panel and click "Configure" in the "Smart Firewall" menu tab.
3. Select "Configure" under the "Advanced Settings" section of the menu followed by the "Add" menu button. Click "Allow" and "Next" in the "Add Rule Wizard."
4. Choose "Connections to and from other computers" followed by the "Next" menu button. On the subsequent menu click "Only the computers and sites listed below" followed by the "Add" menu button.
5. Click "Individually" followed by the URL or website name that the program on your computer is attempting to connect to and is being blocked followed by the "Ok" and "Next" menu buttons.
6. Choose the "Only Communications that match all types and ports listed below" menu option followed by the "Add" button.
7. Click "Individually specified ports" and enter 30300 "Ok" and "Next" menu buttons.
8. Enter a name for the new firewall rule followed by the "Next" and "Finish" menu buttons and exit Norton Internet Security to complete opening the desired port.

Testing a Port

- Ping the ip address does not tell you that a specific port is open.
- Ports are transport layer protocols
- To check ports you need a network monitoring program like
- Open Windows Start menu > Type "Control Panel" > Press Enter > "Programs" > "Programs and Features" > Turn Windows features on or off > Select "Telnet Client" > Press "OK"Telnet to the IP/port 010.067.029.254/30300
- If it is immediately disconnected then the port is on a live host and is closed (or a firewall sent you a TCP reset). If a window opens the port is open. If it times out then you didn't reach the host/port (or a firewall dropped the packet)

Add Uplink Remote

- Activate the Unit
- UPP requires a remote plan
- Add Uplink Remote
- Select the plan with Upload Download
- Select Upload Download

Numerex Solutions & Numerex Mobile Support

Logged in to Numerex Solutions as Karthik Anumonda
Synced to unit 0810180345 (LTE30EX) (Region -) LG=No, VR=Yes
Synced to account 366, Numerex R&D (R&D / 2585)
Synced to user 47640, Joe Ellis (JoeEllis / 413ACook)
Not synced to a consumer
Notes for R&D use only

Logout Search Test Programming Signal History Reports Manuals & Marketing Materials Employee Site Map

Add/Remove Uplink Remote 0810180345 (LTE30EX)
Currently AnyNET 2500/2500EZ, 2530, 2550, 2590, 4500EZ, 4530d, 4530dEX, LTE30EX, 4550, 4590, 4640 & 5500 models supported.

Uplink Remote Plan Standard Remote No Charge w/ UploadDownload \$0.00 Update

Uplink Panel Programmer:
Wirelessly program your alarm panel using the Uplink Panel Programmer (UPP) to connect to your Uplink LTE30EX compatible panels using the manufacturer's software.
Click the link below to download.
[Uplink.exe](#)

	Standard Remote		Advanced Remote	
Item	Event History	Notifications	Event History	Notifications
Emergency Alarms	Yes	Selectable	Yes	Selectable
Arming Events	Yes	Selectable	Yes	Selectable

Interactive11 Web Service X Kafka Deployment - Gateway X User Portal Add/Remove Uplink Re: X

uplink

Logout Search Test Programming Signal History Reports Uplink Remote Manuals & Marketing Materials Site Map

ppst > Programming > Add/Remove Uplink Remote

Add/Remove Uplink Remote 0810180345 (LTE30EX)
Currently AnyNET 2500/2500EZ, 2530, 2550, 2590, 4500EZ, 4530d, 4530dEX, LTE30EX, 4550, 4590, 4640 & 5500 models supported.

Uplink Remote Plan Standard Remote No Charge w/ UploadDownload \$0.00 Update

Uplink Panel Programmer:
Wirelessly program your alarm panel using the Uplink Panel Programmer (UPP) to connect to your Uplink LTE30EX compatible panels using the manufacturer's software.
Click the link below to download.
[Uplink.exe](#)

	Standard Remote		Advanced Remote	
Item	Event History	Notifications	Event History	Notifications
Emergency Alarms	Yes	Selectable	Yes	Selectable
Arming Events	Yes	Selectable	Yes	Selectable
Arming Events In A Period	Yes	Selectable	Yes	Selectable

Download the Uplink Panel Programmer

Click here
Uplink exe



The screenshot shows the Uplink web portal interface. At the top, there's a navigation bar with links like Logout, Search, Test, Programming, Signal History, Reports, Uplink Remote, Manuals & Marketing Materials, and Site Map. The main content area is titled "Edit Uplink Remote Profile 0810180345 (LTE30EX)". Below this, there's a section for "Uplink Panel Programmer" with instructions on how to use it. A link labeled "Uplink.exe" is provided for download. Below this, there's an "Important" section with detailed instructions for programming the panel. At the bottom, there's a form for configuring the panel's settings, including fields for "Panel Arm Command", "Panel Disarm Command", "Panel Armed Indicator", and "Panel Disarmed Indicator".

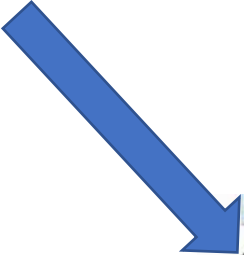
Uplink Panel Programmer:
Wirelessly program your alarm panel using the Uplink Panel Programmer (UPP) to connect to your Uplink LTE30EX compatible panels using the manufacturer's software.
Click the link below to download.
[Uplink.exe](#)




Important:
1. Panel Arm/Disarm Commands:
a. For panels with a maintained/latching keyswitch zone, indicate here if arming/disarming requires an open or closed contact from the LTE30EX/4330d's Output 1.
b. For panels with a momentary keyswitch zone, indicate here the type and duration of the pulse required from the LTE30EX/4330d's Output 1.
2. Commands will only work if the output is not mapped to trouble(s). Under Programming > Program and Over-The-Air on the menu scroll down to Output Relay 1 Mapping, uncheck all boxes and click Send.
3. Once the LTE30EX/4330d's Output 1 is designated for use as panel arm/disarm a command to change the state of the output should **never** be sent from this portal.
4. Panel Armed/Disarmed Indicators:
a. Panel Armed is when the panel's PGM output is supplying 12VDC to the LTE30EX/4330d's Panel Armed input. Most PGM outputs are 12VDC when Armed.
b. Panel Disarmed is when the PGM output is supplying 0VDC.

Uplink Panel Board Connected? ☐ [Update](#)

Panel Arm Command (Keyswitch Zone)	Output 1 Pulse Closed 1 Sec
Panel Disarm Command (Keyswitch Zone)	Output 1 Pulse Closed 1 Sec
Panel Armed Indicator	Panel Armed
Panel Disarmed Indicator	Panel Disarmed

Install the Program Application

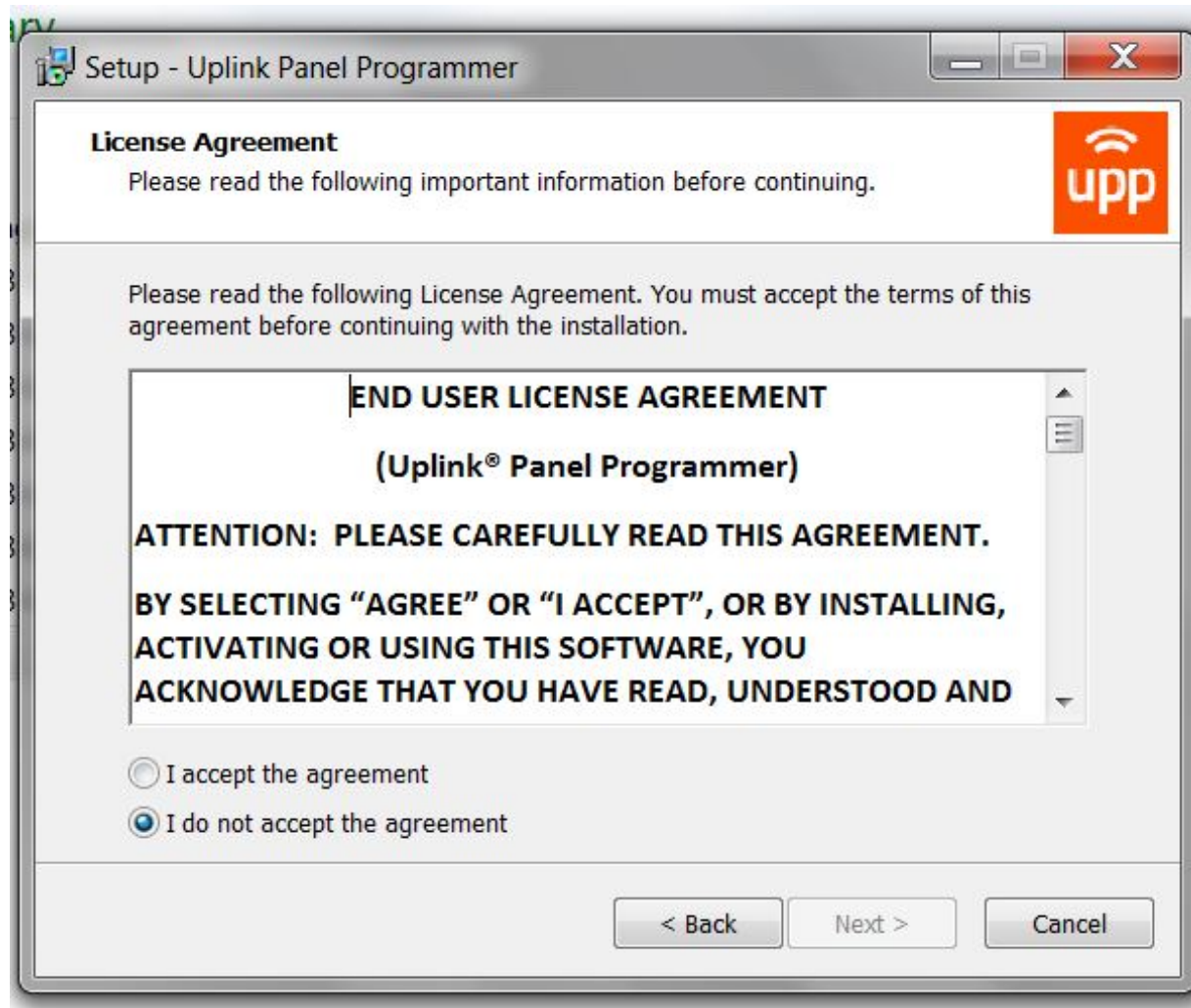


	2018-03-04 23_57_08-Upp1	3/4/2018 11:58 PM	JPEG image	28 KB
	uplink_1.0.0.0	3/4/2018 8:51 PM	Application	4,732 KB
	settings	3/4/2018 8:50 PM	XML Document	1 KB

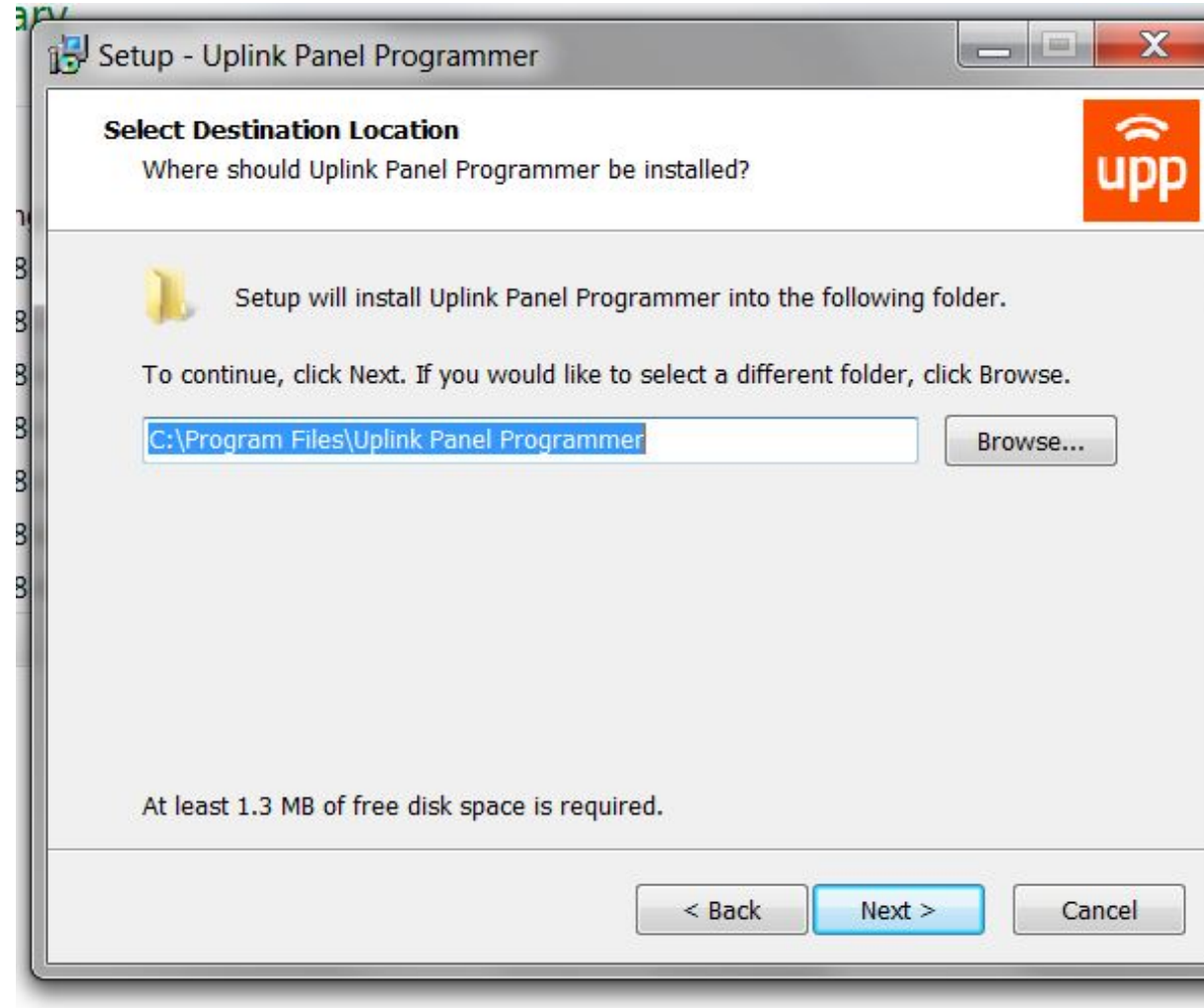
Setup Wizard



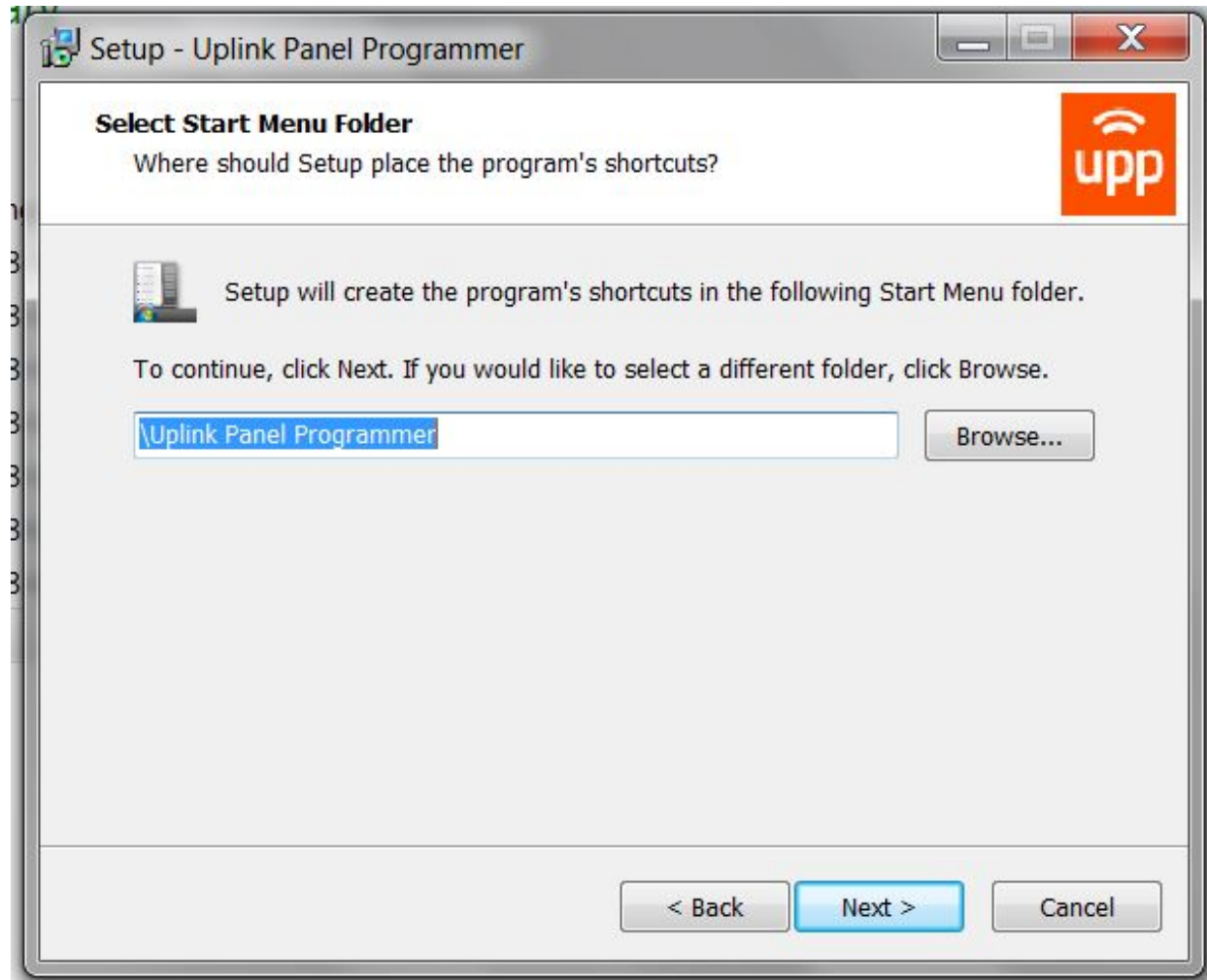
Accept the Agreement



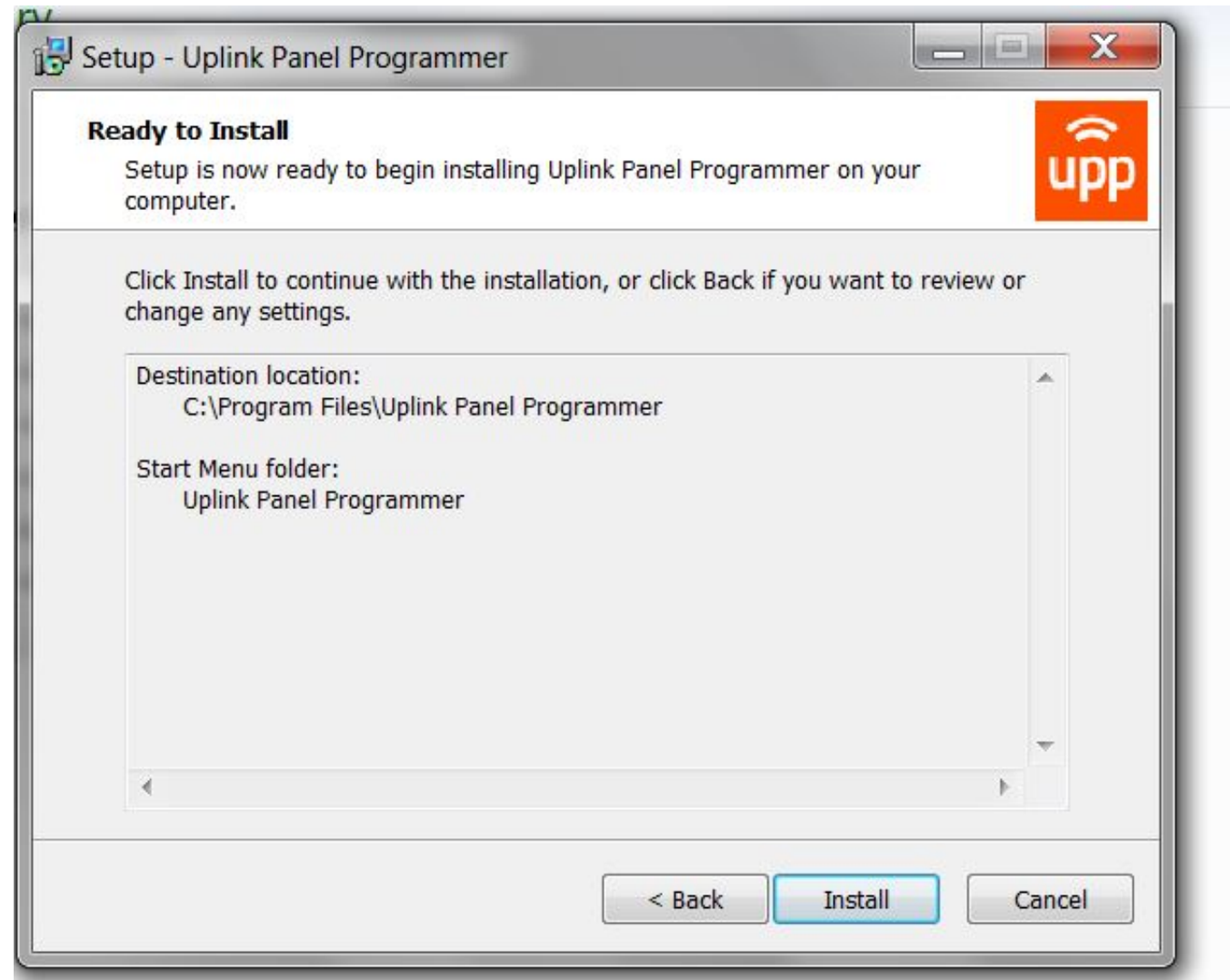
Select the Download Location



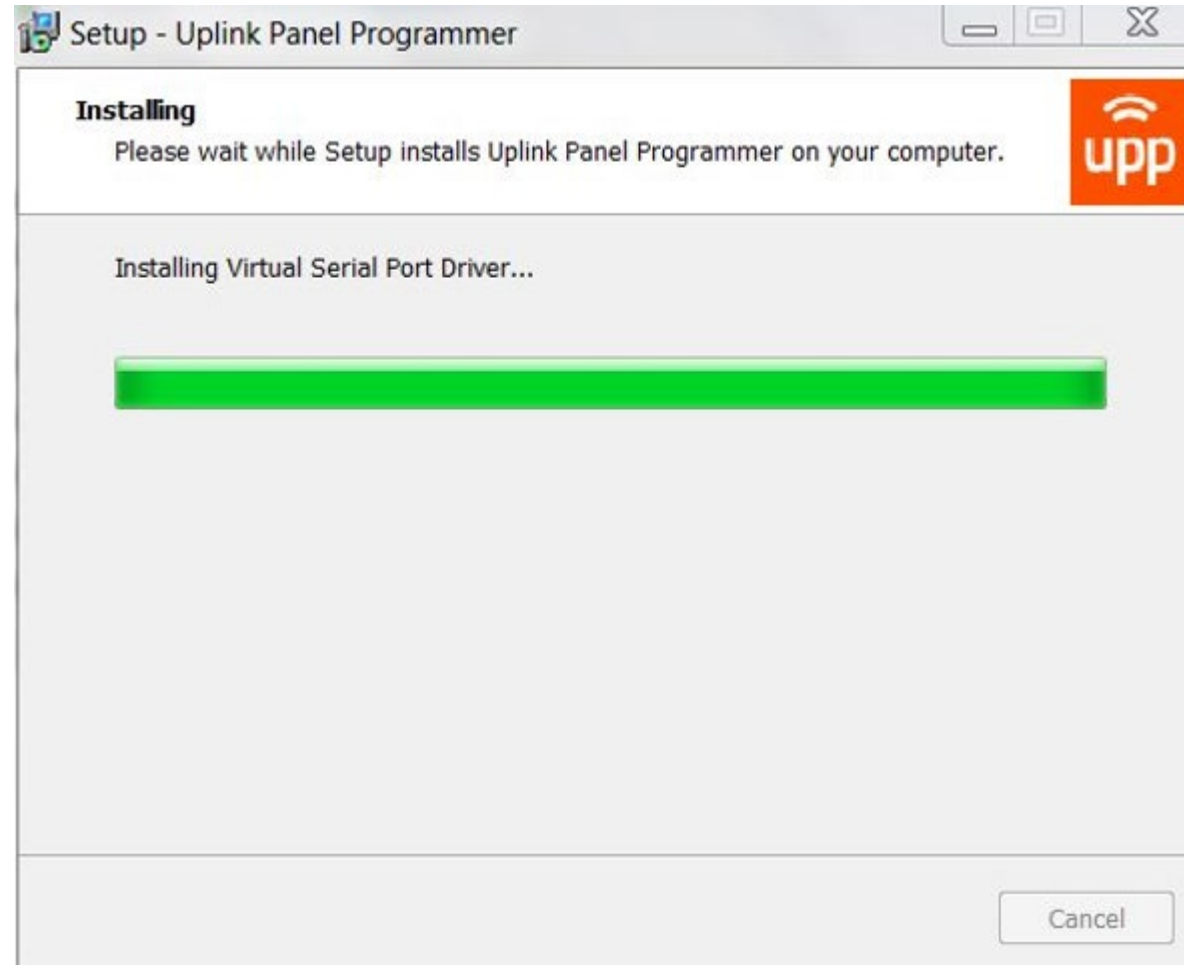
Locate Shortcut



Confirmation

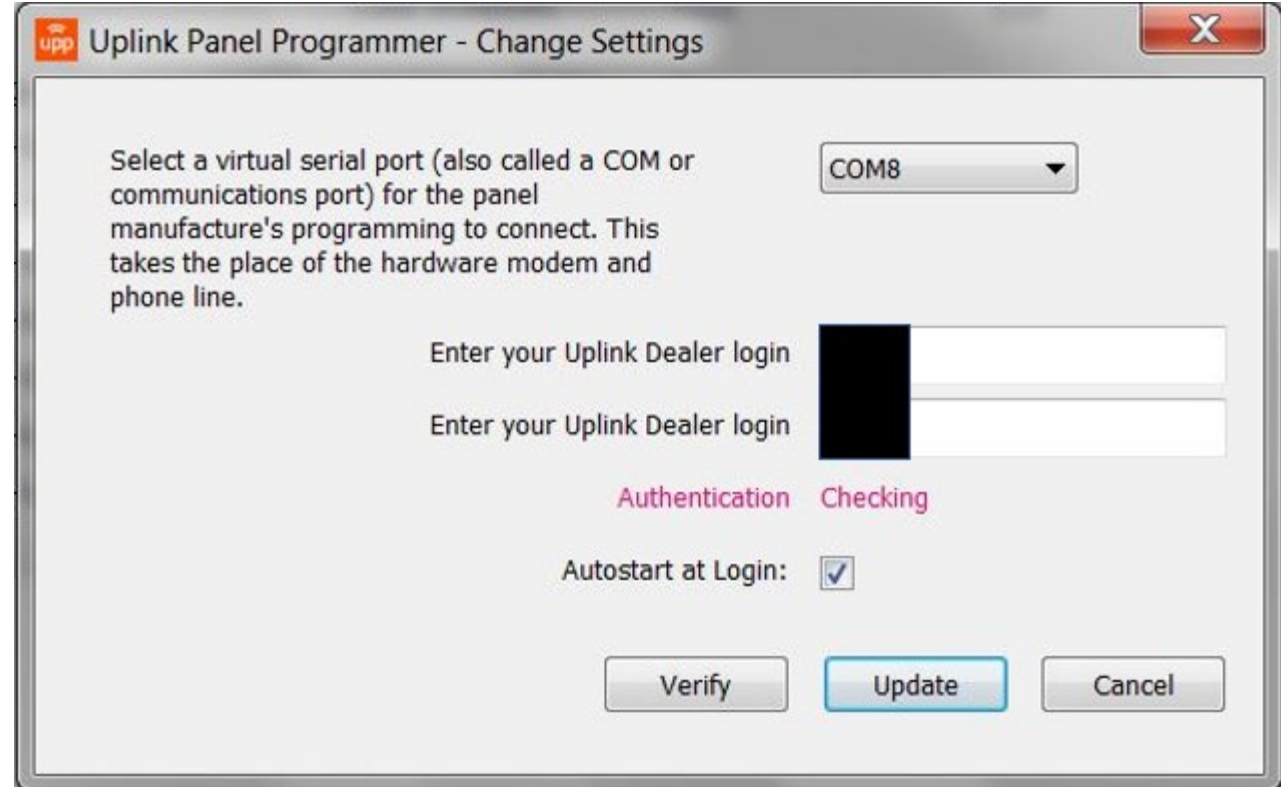


The program will install on the computer



Logging In

- Choose the com port
- Enter Login info
- Verify login
- Select Update
- Should be done every time you download a panel



The screenshot shows a Windows-style dialog box titled "Uplink Panel Programmer - Change Settings". Inside the dialog, there is a text instruction: "Select a virtual serial port (also called a COM or communications port) for the panel manufacture's programming to connect. This takes the place of the hardware modem and phone line." To the right of this text is a dropdown menu currently set to "COM8". Below this, there are two input fields for "Enter your Uplink Dealer login", each preceded by a black square icon. Between these two fields, the word "Authentication" is written in pink. Below the input fields, the word "Checking" is written in pink. At the bottom of the dialog, there is a checkbox labeled "Autostart at Login:" which is checked. At the very bottom, there are three buttons: "Verify", "Update" (which is highlighted with a blue border), and "Cancel".

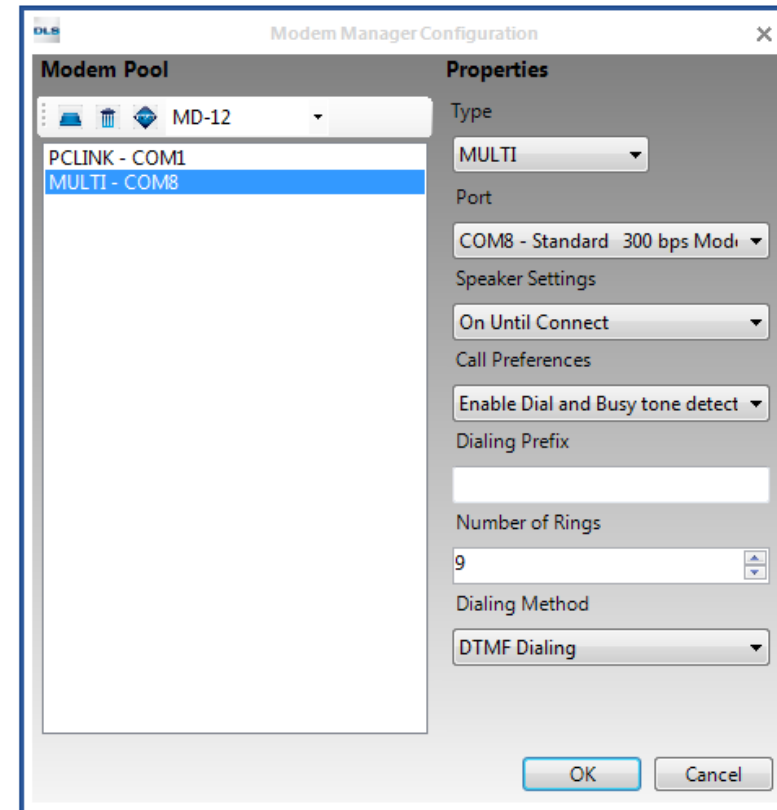
Program loaded

- The UPP icon will be in your start menu
- The program is installed for all subsequent installs
- The icon will change from blue gray to orange when the virtual serial port is active



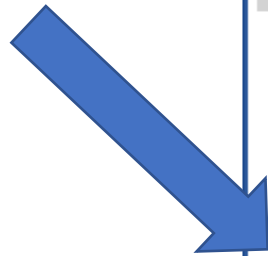
DSC DLS 5

Configure a Modem in Panel Software



Dial using the Serial Number as Phone number

Override default
with PC-Link can
NOT be checked



Connect Only

Basic Options

Panel	Connection Type	Access Code	Device ID
isc test upp	PSTN	161600	161600

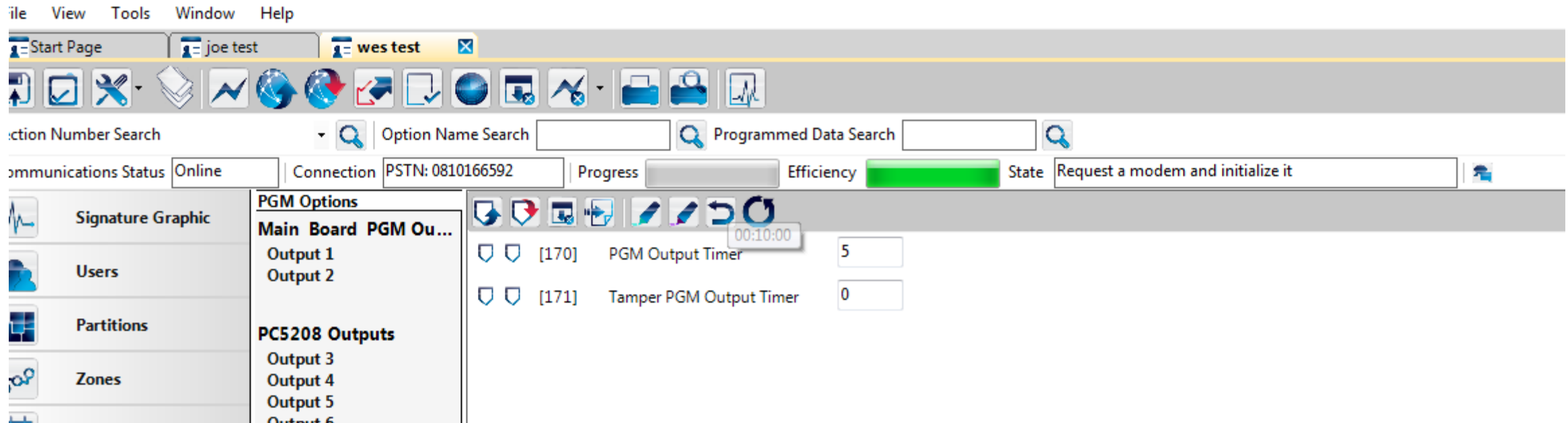
Comments

☐ Automatically Hangup when Finished

☐ Override default connection type with PC-Link

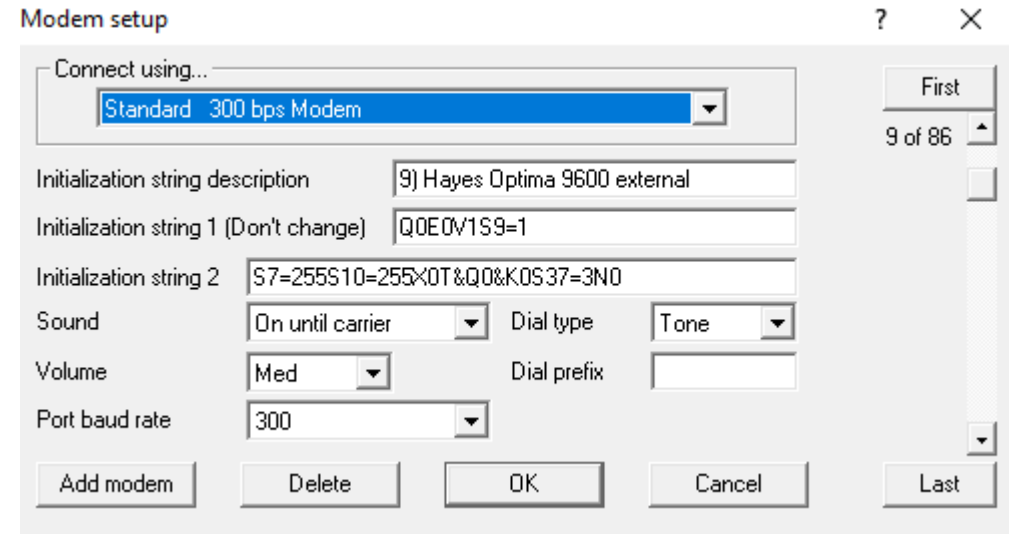
Show Tags OK Cancel

Use your Software as Normal



Caddx DL900

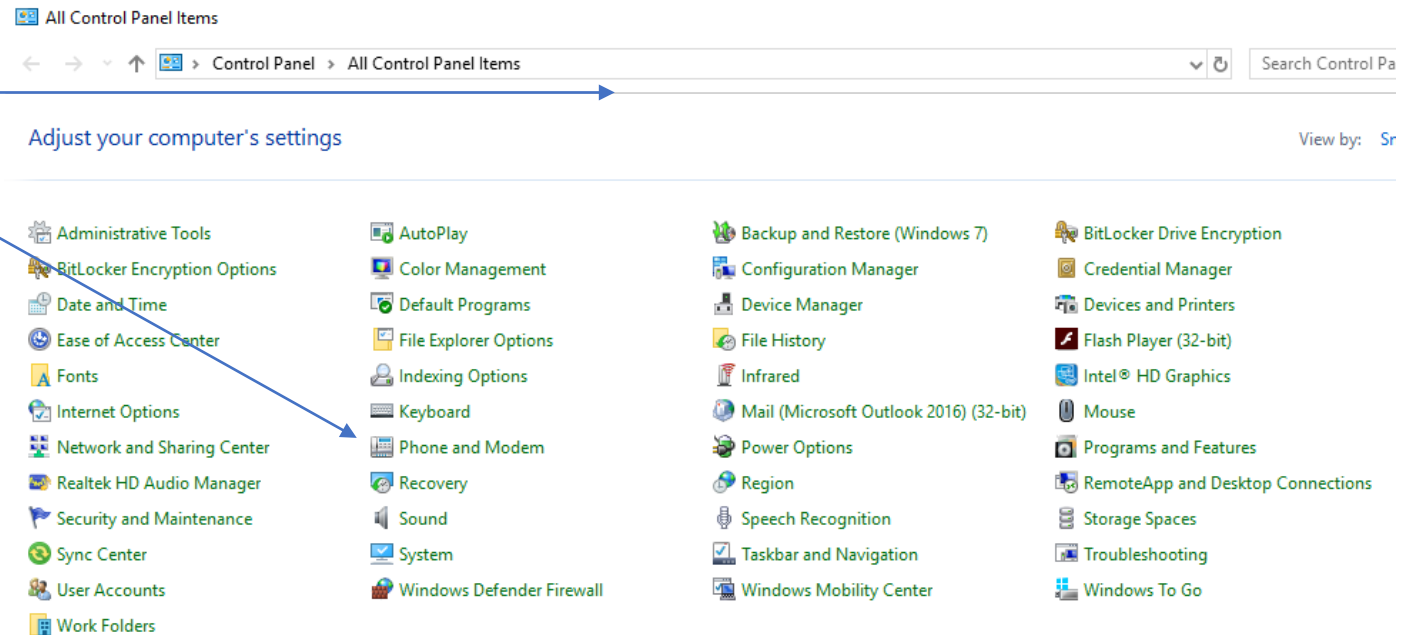
- Go to Program
- Setup
- Modem Setup
- Standard 300bps
- Modem must also be set up in windows control panel



Caddx DL900

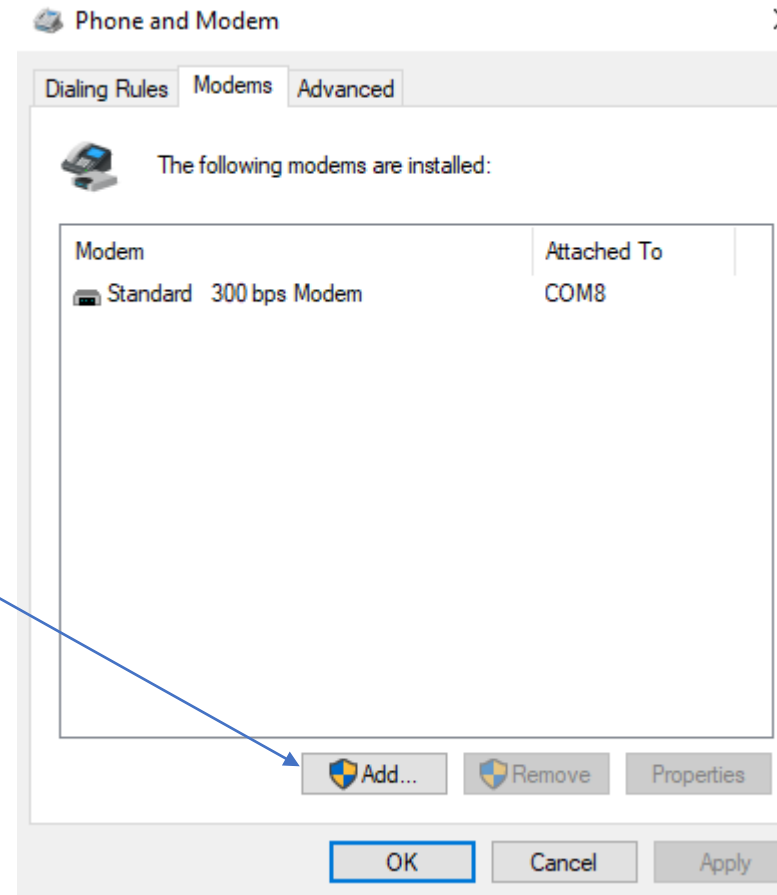
In Windows control Panel

- Select Phone and Modem



Caddx DL900

Select Add



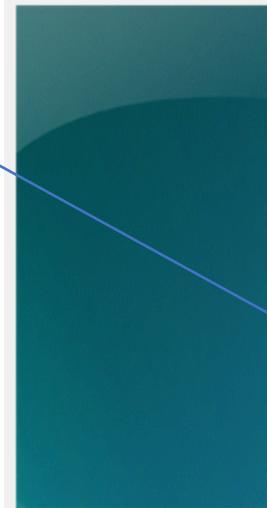
Caddx DL900

- Select Don't Detect my modem
- Click Next

Add Hardware Wizard

Install New Modem

Do you want Windows to detect your modem?



Windows will now try to detect your modem. Before continuing, you should:

1. If the modem is attached to your computer, make sure it is turned on.
2. Quit any programs that may be using the modem.

Click Next when you are ready to continue.

☒ Don't detect my modem; I will select it from a list.

< Back

Next >

Cancel

Caddx DL900

Add Hardware Wizard

Install New Modem

Select the port(s) you want to install the modem on.

You have selected the following modem:

Standard 300 bps Modem

On which ports do you want to install it?

☐ All ports

☒ Selected ports

COM8

< Back Next > Cancel

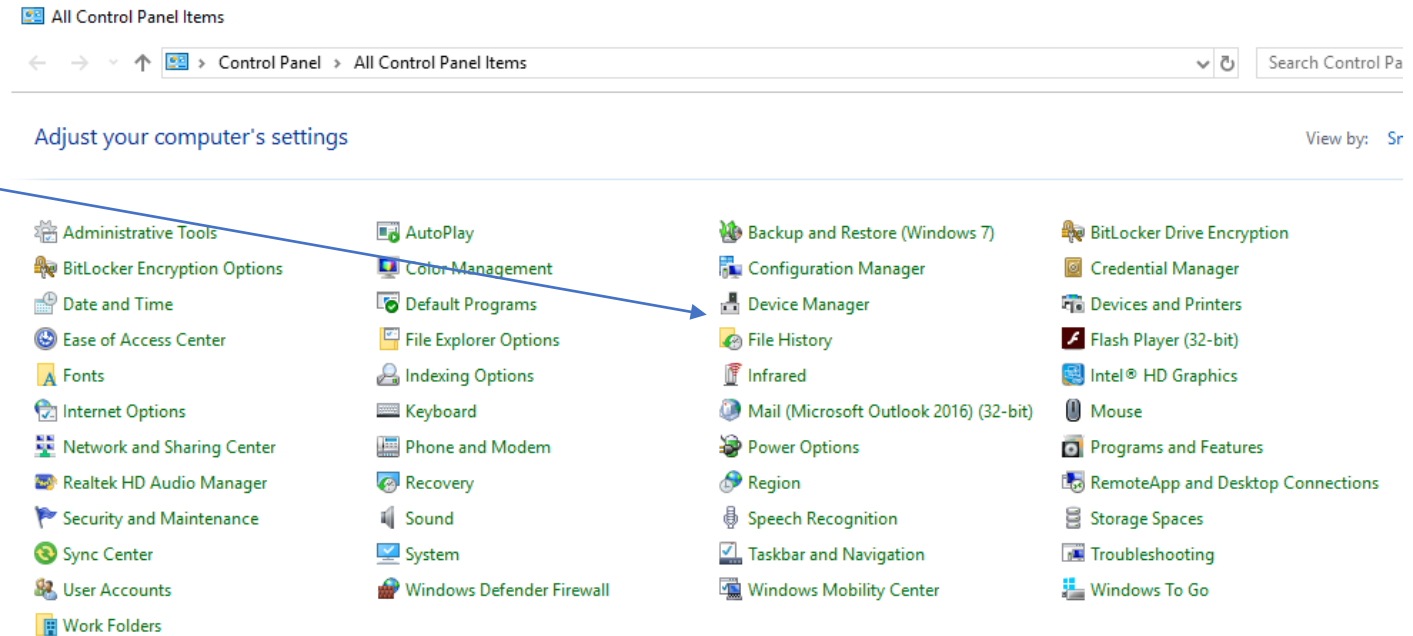
Select Standard 300 bps

Select Selected Ports

Select the port you
selected in UPP

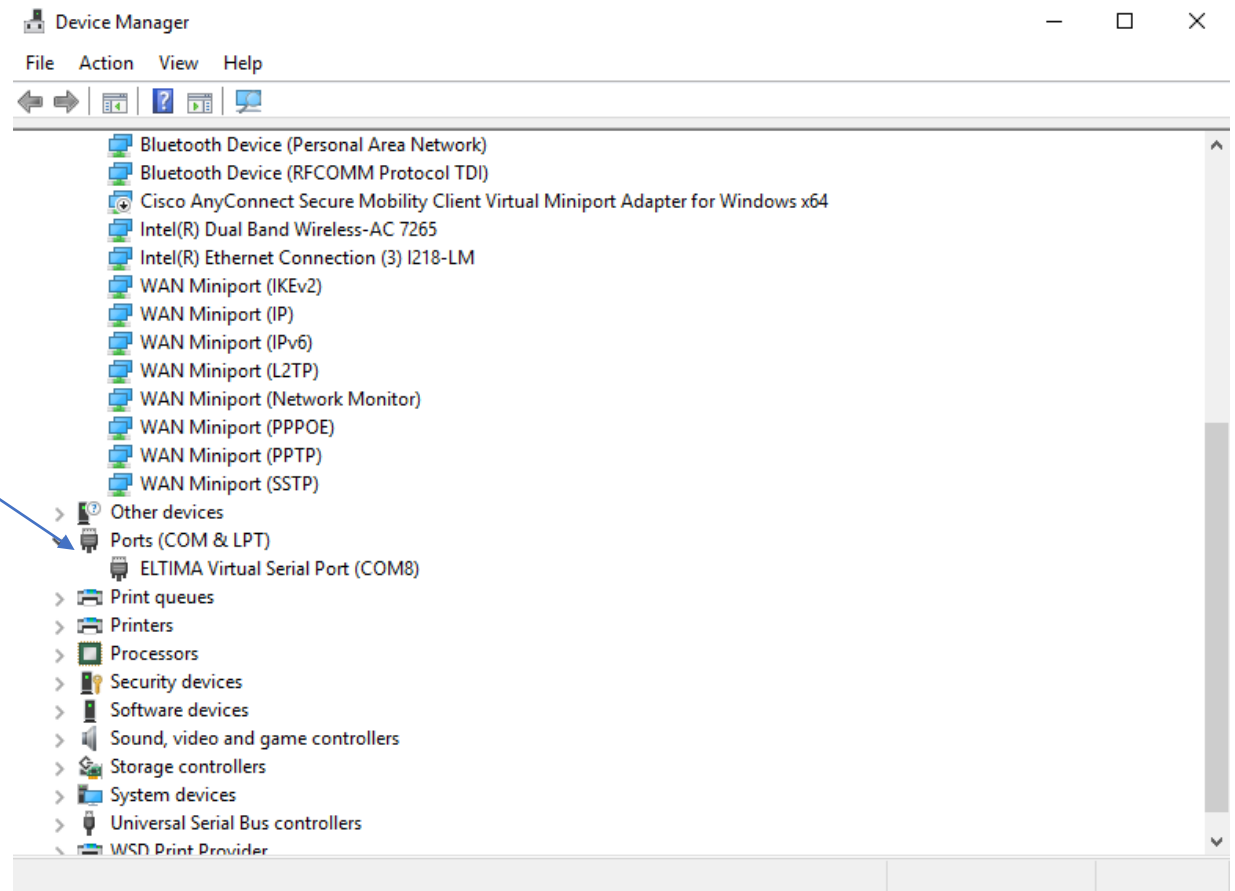
Checking Comm Port for Conflict

Select Device Manager



Checking Comm Port for Conflict

- Ports (Com & LPT)
- If there is a conflict
 - Yellow exclamation point
 - Red stop sign
- If there is a conflict select another comm port
 - In UPP
 - Panel Software
 - Windows



Trouble Shooting Tips

- Panels should have answering machine defeat (two call) turned off both in the panel and the software.
- Uncheck for automatic connection via PC link.
- Ensure you have remote access allowed in the panel.
- Ensure you have the correct Upload Download password in the panel and software.
- Number of rings to answer in the panel should be set to three.
- You should load software on individual computers not a server.
- You should reverify your login credentials each time you use the UPP.
- Batch loading is not supported
- The panel will not send alarms while you are in an upload download session.
- Make sure you remember to disconnect after you are done.

Questions