



## Uplink GPSLTE OBD Vehicle Tracking Device

### Vehicle Tracking Solutions Made Simple, Reliable, and Affordable.

Uplink GPS is a turnkey vehicle tracking service for commercial and residential customers. Uplink GPS features a fully-hosted, cloud-based vehicle tracking service, and a dealer-branded portal with no set up fees.

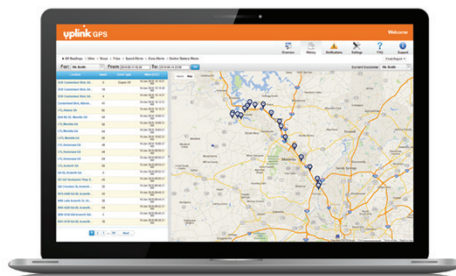
### Add New Revenue Streams and Additional Product Offering.

Uplink GPS offers turn-key vehicle and asset tracking solutions for resell to commercial and residential customers. Our solution provides you with an opportunity to extend your relationship beyond the boundaries of traditional security solutions by adding asset tracking for your customers as an additional recurring revenue source. Security dealers may also benefit from GPS solutions by tracking and monitoring their own fleets as they service their alarm customers in the field.

Featuring several device tracking options along with a cloud based asset tracking software application, Uplink GPS uses an interactive mapping feature that can be viewed on any desktop, smartphone or tablet device.

#### UPLINK ADVANTAGES

- Profitability: increase recurring monthly revenue (RMR)
- Tracking & Visibility: monitor times (travel, onsite, start and end, idle), ignition events, and more
- Asset Recovery: view vehicle locations recorded every two or five minutes, including 60 days of stored history
- Peace of Mind: track teens, elderly drivers, or a commercial fleet.
- Live technical and activation support, 8:00 a.m. to 8:00 p.m. EST, Monday through Friday



Works with Uplink GPS application

#### Device Features:

- AT&T LTE Cat M1
- 4G LTE Bands 2, 4, and 12
- LED status indicators for GPS lock, GSM registration and OBD II communication
- Supports OTA updates for FW and Configurations
- Supports SMS, UDP, FTP
- Supports standard passenger vehicles with OBD connection
- 3-axis Accelerometer and Motion De-tector
- Integrated GPS receiver and antenna for tracking applications
- Includes 250 mAh backup battery

Specifications

PHYSICAL	
Material	PC
Dimensions (L x W x H)	2.4 x 1.8 x 1.1 inches 5.9 x 4.6 x 2.8 mm
Weight	<2 ounces, 34 grams
ELECTRICAL	
DC Power	8 to 28V DC
PHYSICAL CONNECTION	
	OBD Connector
	GPS Antenna
	Cellular Antenna
ENVIRONMENTAL	
Operating Temperature	-30°C to +70°C
GPS TECHNOLOGY	
Receiver Type	72 channel
Receiver Tracking Sensitivity*	-165 dBm
Accuracy*	+/- 2.5m CEP
TTF Cold Start*	27 seconds (Typical)
TTF Hot Start*	1 second (Typical)
CELLULAR SPECIFICATION	
	4G LTE Cat M1 Characteristics
	3GPP Release 13
	LTE (FDD)
	Supported Bands:
	FDD 2, FDD 4, and FDD 12
	SMS: MT/MO
OBDII SUPPORT	
Digital Inputs	J1850 PWM
Relay Drive Outputs	J1850 VPW
Switched output	ISO-9141-2
LED drive Output	ISO-14230 KWP2000
RS-232 port	ISO-15765 CAN
PROPRIETY OBD SUPPORT	
	Medium Speed CAN
	Single wire CAN
	K-Line Mux
CERTIFICATIONS	
	PTCRB, FCC, ISED, AT&T

Specifications subject to change without notice.

\*50%, 24 static-130dBm, >6 Sats.

**About Sierra Wireless**

Sierra Wireless (NASDAQ: SWIR) (TSX: SW) is an IoT pioneer, empowering businesses and industries to transform and thrive in the connected economy. Customers Start with Sierra because we offer a device to cloud solution, comprised of embedded and networking solutions seamlessly integrated with our secure cloud and connectivity services. OEMs and enterprises worldwide rely on our expertise in delivering fully integrated solutions to reduce complexity, turn data into intelligence and get their connected products and services to market faster. Sierra Wireless has more than 1,300 employees globally and operates R&D centers in North America, Europe and Asia.

Connect with Sierra Wireless on the IoT Blog at [www.sierrawireless.com/iot-blog](http://www.sierrawireless.com/iot-blog), on Twitter at [@SierraWireless](https://twitter.com/SierraWireless), on LinkedIn at [www.linkedin.com/company/sierra-wireless](http://www.linkedin.com/company/sierra-wireless) and on YouTube at [www.youtube.com/SierraWireless](http://www.youtube.com/SierraWireless)

Sierra Wireless, the Sierra Wireless logo, Uplink, and the red wave design are trademarks of Sierra Wireless. Other registered trademarks that appear on this brochure are the property of the respective owners. © 2020 Sierra Wireless, Inc. 2020.23.09

